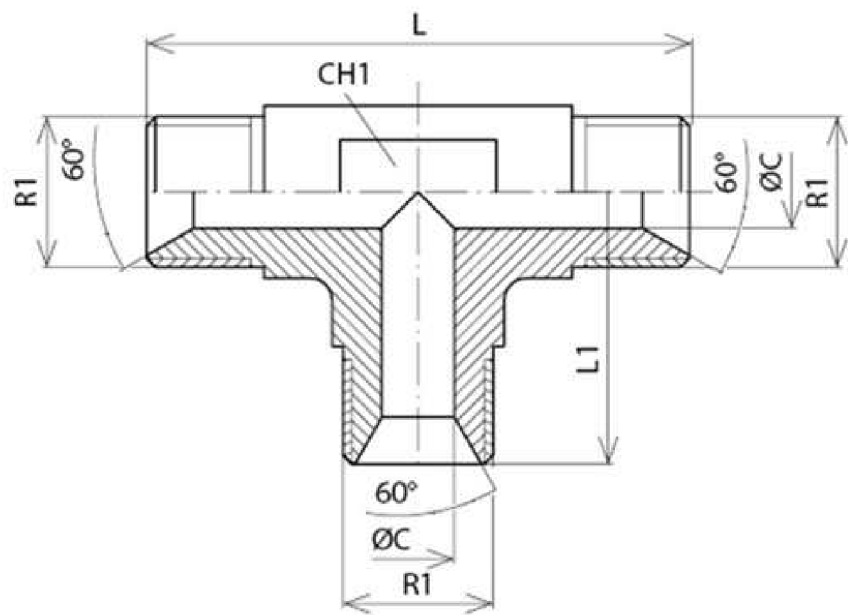


Tee BSP Male (60°) forge



Part nº	R1	R2	R3	L	L1	CH1	ØC
S122002	1/8" BSP	1/8" BSP	1/8" BSP				
S122004	1/4" BSP	1/4" BSP	1/4" BSP	54	27	14	4,7
S122006	3/8" BSP	3/8" BSP	3/8" BSP	58	29	19	7,9
S122008	1/2" BSP	1/2" BSP	1/2" BSP	70	35	22	11,1
S122012	3/4" BSP	3/4" BSP	3/4" BSP	82	41	27	16,7
S122016	1" BSP	1" BSP	1" BSP	92	46	33	22,2
S122020	1"1/4 BSP	1"1/4 BSP	1"1/4 BSP	102	51	41	28,6
S122024	1"1/2 BSP	1"1/2 BSP	1"1/2 BSP	118	59	48	33,3